



FUJITSU ELECTRIC

SPLIT TYPE AIR CONDITIONER (50Hz)

DUCT type

SERVICE MANUAL

| Models | Indoor unit | Outdoor unit |
|--------|-------------|--------------|
| | RD-90EB | RO-90EPB |



C O N T E N T S

| | |
|------------------------------------|----|
| SPECIFICATIONS..... | 1 |
| OUTLINE AND DIMENSIONS..... | 2 |
| CIRCUIT DIAGRAM..... | 5 |
| REFRIGERANT SYSTEM DIAGRAM..... | 6 |
| INDOOR PRINTED CIRCUIT BOARD..... | 7 |
| CIRCUIT DIAGRAM | |
| OUTDOOR PRINTED CIRCUIT BOARD..... | 8 |
| CIRCUIT DIAGRAM | |
| DISASSEMBLY ILLUSTRATION..... | 9 |
| PARTS LIST..... | 15 |
| STANDARD ACCESSORIES..... | 17 |



Большая библиотека технической документации

<https://splitsystema48.ru/instrukcii-po-ekspluatatsii-kondicionerov.html>

каталоги, инструкции, сервисные мануалы, схемы.

S P E C I F I C A T I O N S

| | | |
|------------------|------|-------------|
| INDOOR UNIT | | RD-90EB |
| OUTDOOR UNIT | | RO-90EPB |
| COOLING CAPACITY | (kW) | 25.4 - 25.4 |

ELECTRICAL DATA

| | | |
|--------------------|----------------------|-------------|
| POWER SOURCE | (V) | 380 - 415 |
| FREQUENCY | (Hz) | 50 |
| RUNNING CURRENT | (A) | 17.5 - 17.0 |
| INPUT WATTS | (kW) | 10.5 - 10.5 |
| E.E.R. | (kW/kW) | 2.42 - 2.42 |
| MOISTURE REMOVAL | (ℓ/hr) | 7.5 |
| AIR CIRCULATION-Hi | (m ³ /hr) | 4,300 |
| REFRIGERANT | (R407C) (g) | 6,000 |

COMPRESSOR

| | |
|------|---|
| TYPE | Hermetic type, 2 pole, 3-phase, Induction motor |
| CODE | ZRT122K3E-TFD |

FAN MOTOR

| | | | |
|--------------|----------|-----------|-----------|
| MODEL NO. | | RD-90EB | RO-90EPB |
| TYPE | | MFA-90GQH | MFB-90FTH |
| POWER SOURCE | (V) | 380 - 415 | 220 - 240 |
| HI-SPEED | (r.p.m.) | 1,140 | 730 |
| LO-SPEED | (r.p.m.) | ----- | 360 |

DIMENSIONS

| | | | |
|-----------|------|-------------------|---------------------|
| H x W x D | (mm) | 450 x 1,550 x 700 | 1,380 x 1,300 x 650 |
|-----------|------|-------------------|---------------------|

WEIGHT

| | | | |
|-------------|------|----------|-----------|
| GROSS / NET | (kg) | 100 / 85 | 280 / 243 |
|-------------|------|----------|-----------|

ADDITIONAL REFRIGERANT CHARGE

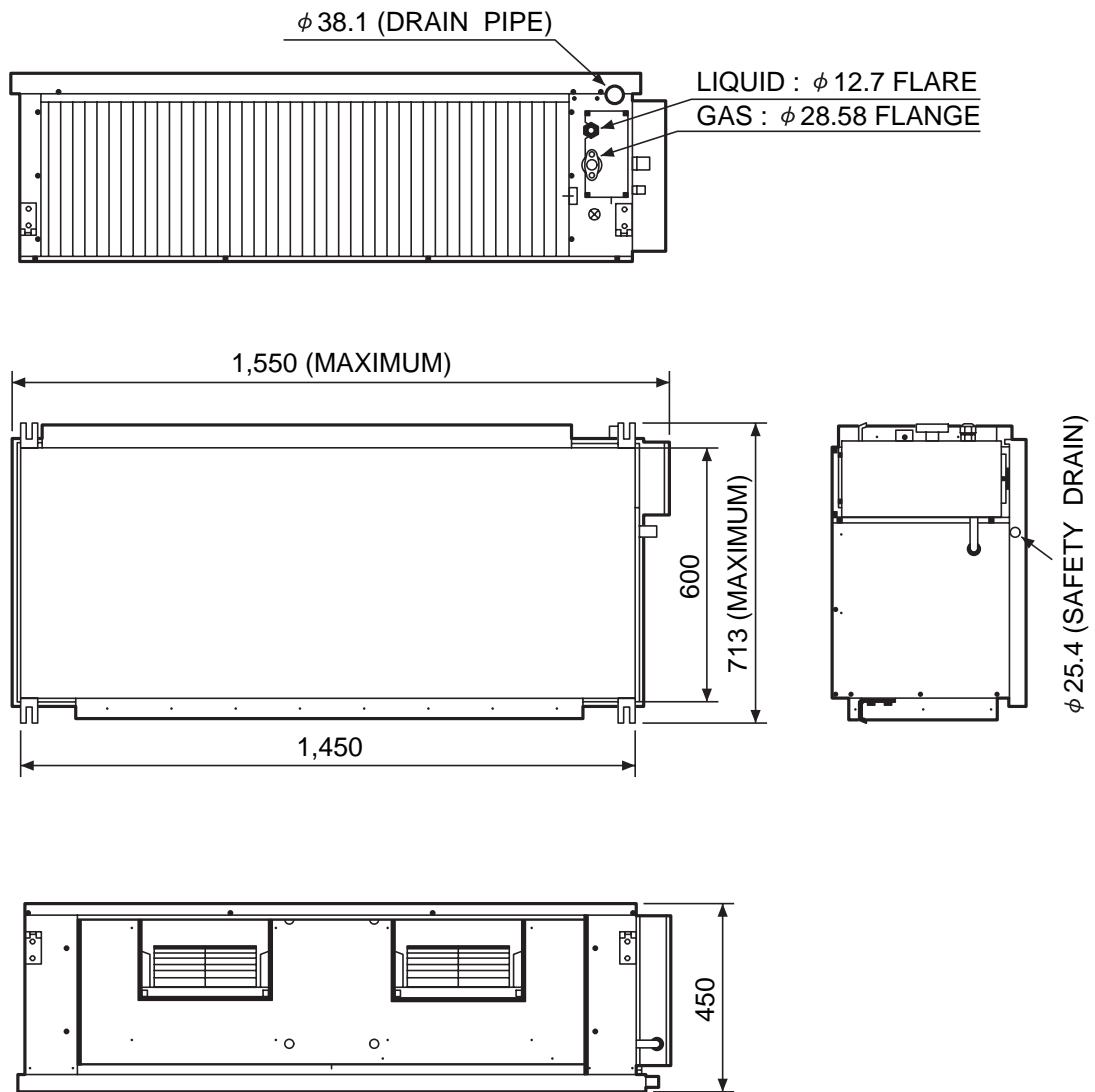
| | | | |
|--------------------|---------|---------|---------|
| PIPE LENGTH | 30 m | 40 m | 50 m |
| FULL CHARGE AMOUNT | 6,000 g | 6,500 g | 7,000 g |

- Note :
- Between 30 m and 50 m, when using a connection pipe other than that in the table, charge additional refrigerant with 50 g/1 m as the criteria.
 - The above list shows values at the external static pressure of 20 mm Aq. (196 Pa).

OUTLINE AND DIMENSIONS

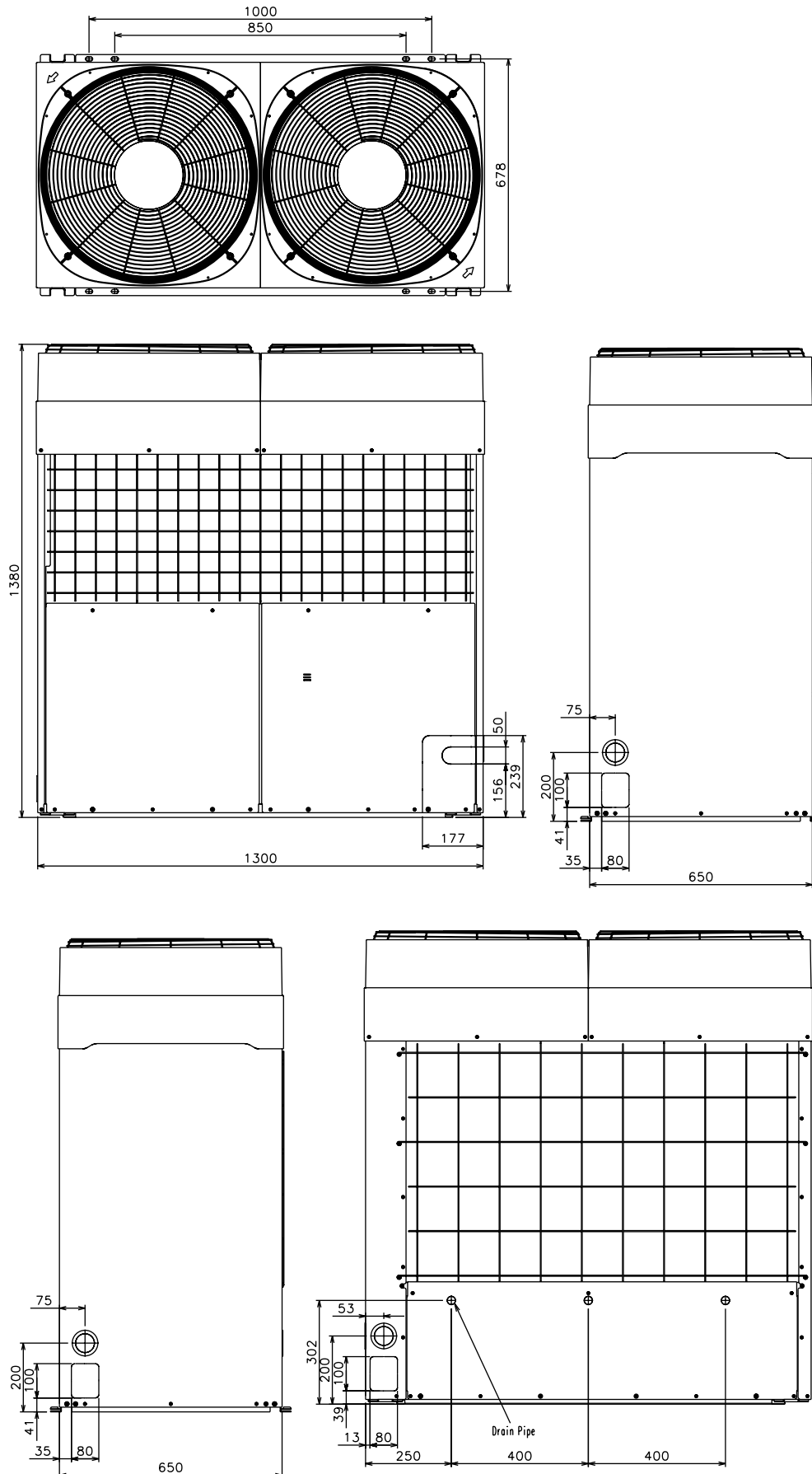
Model : RD-90EB

(Unit : mm)



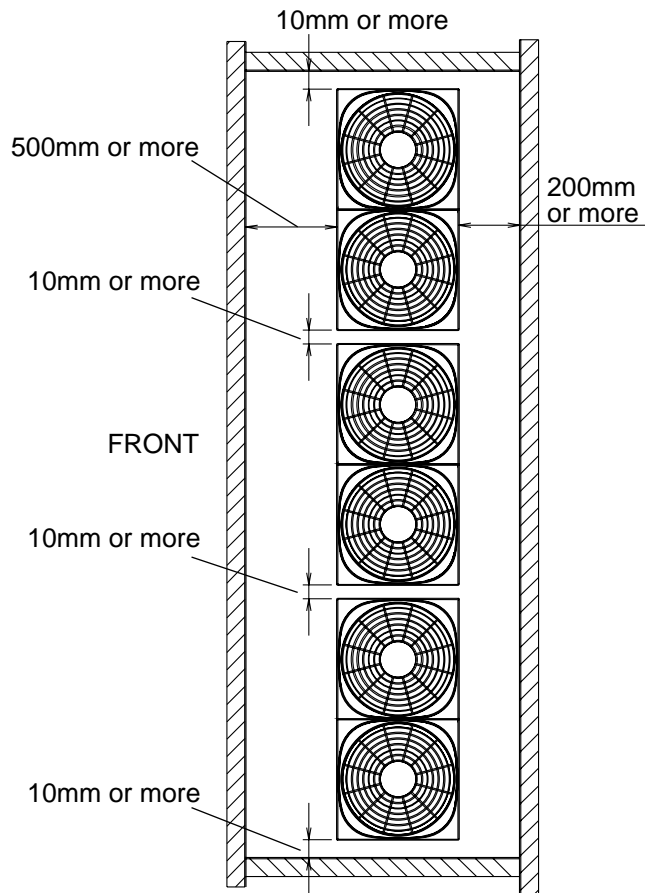
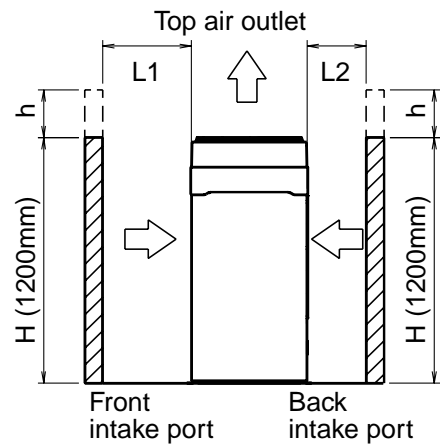
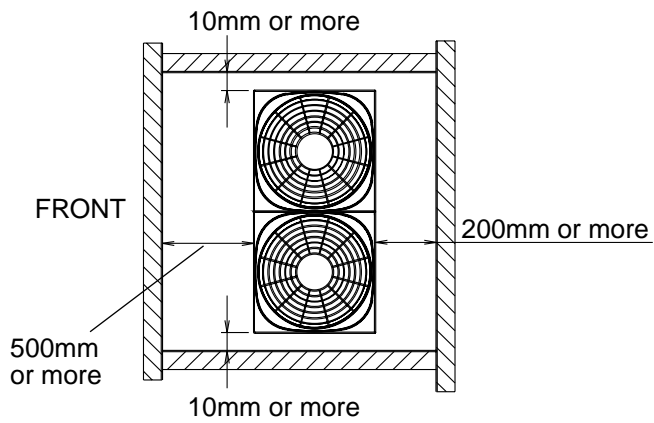
Model : RO-90EPB

(Unit : mm)



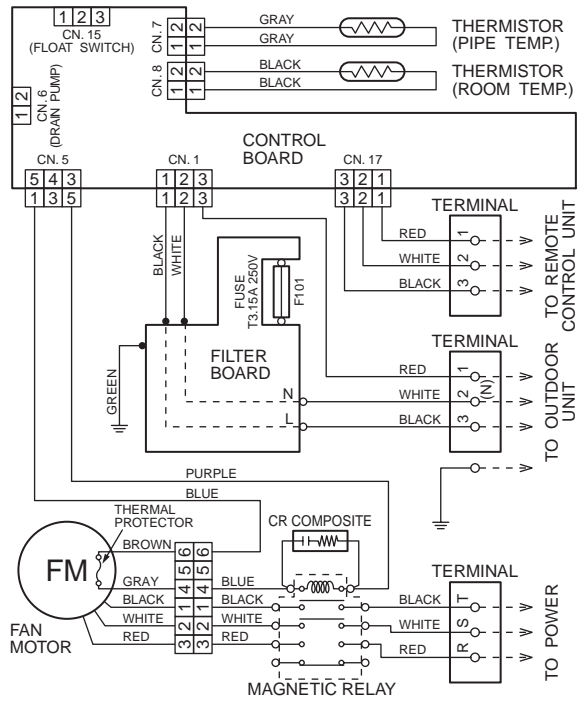
SERVICE SPACE FOR OUTDOOR UNIT

- Height of side wall is free.
- Height (H) of front wall is less than 1,200mm.
- When total height of outdoor unit is lower than front wall, add dimension h to service space for dimensions L1 and L2.

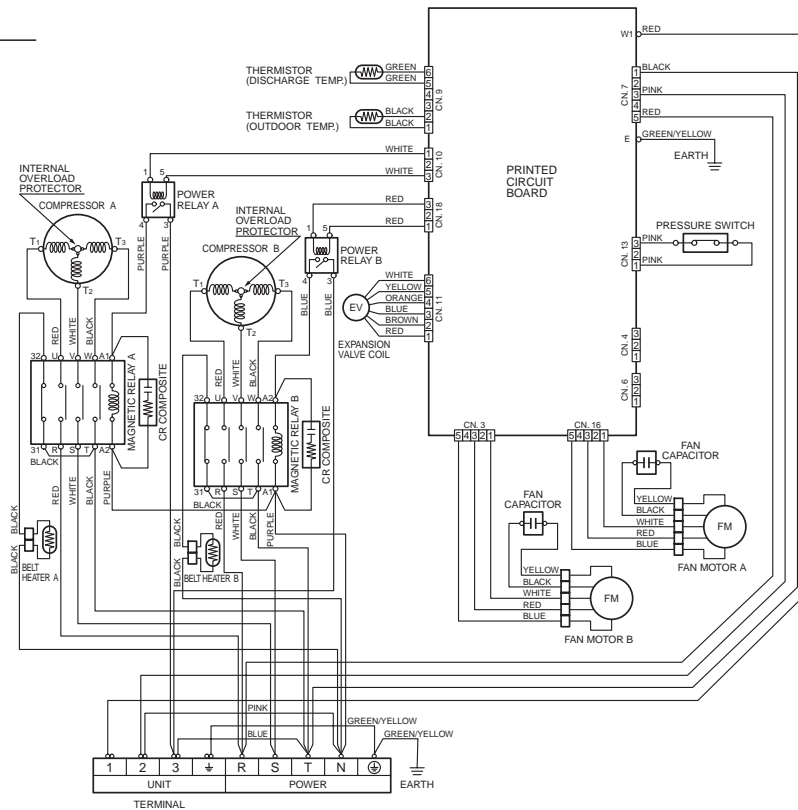


CIRCUIT DIAGRAM

Model : RD-90EB

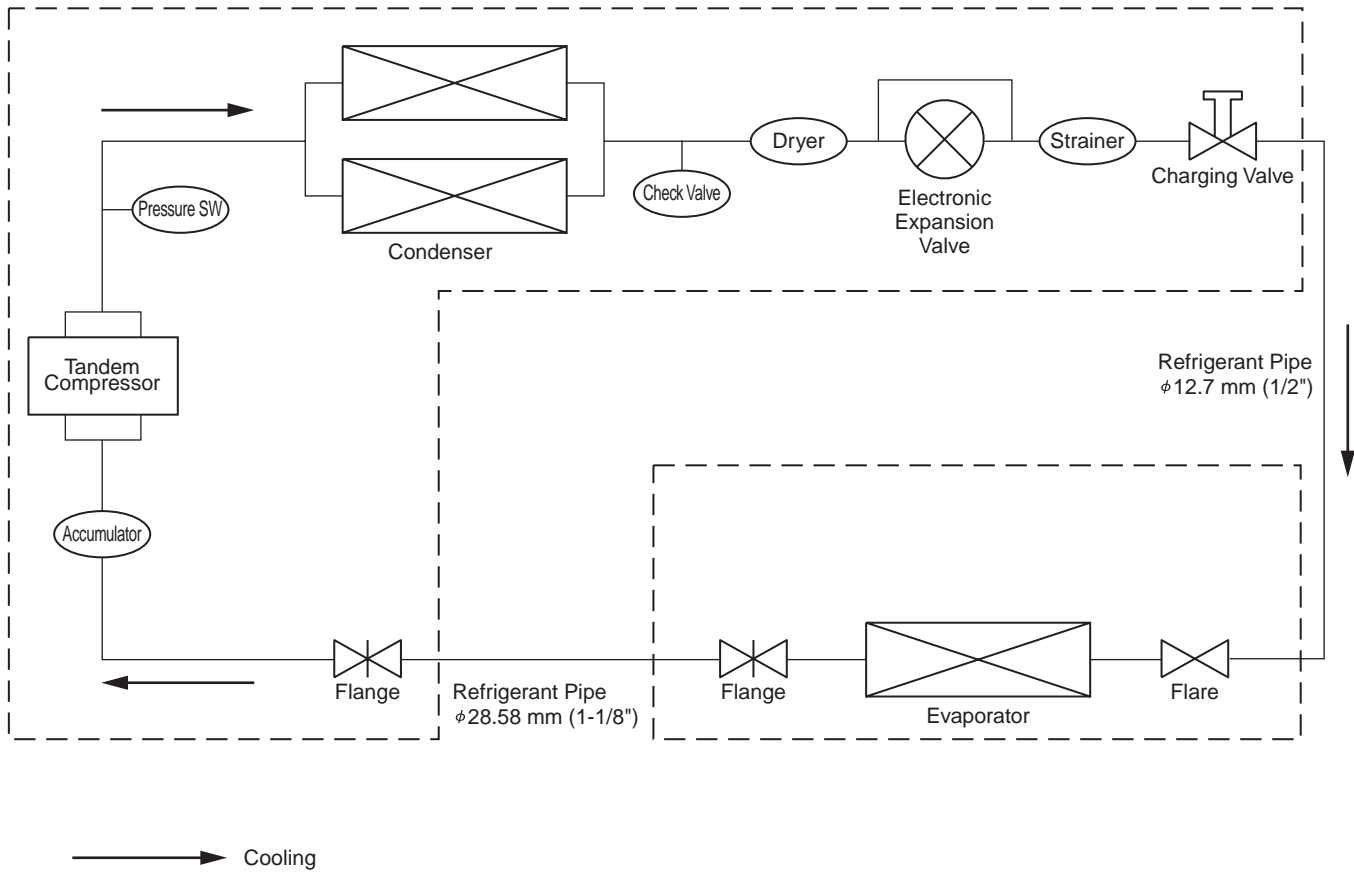


Model : RO-90EPB



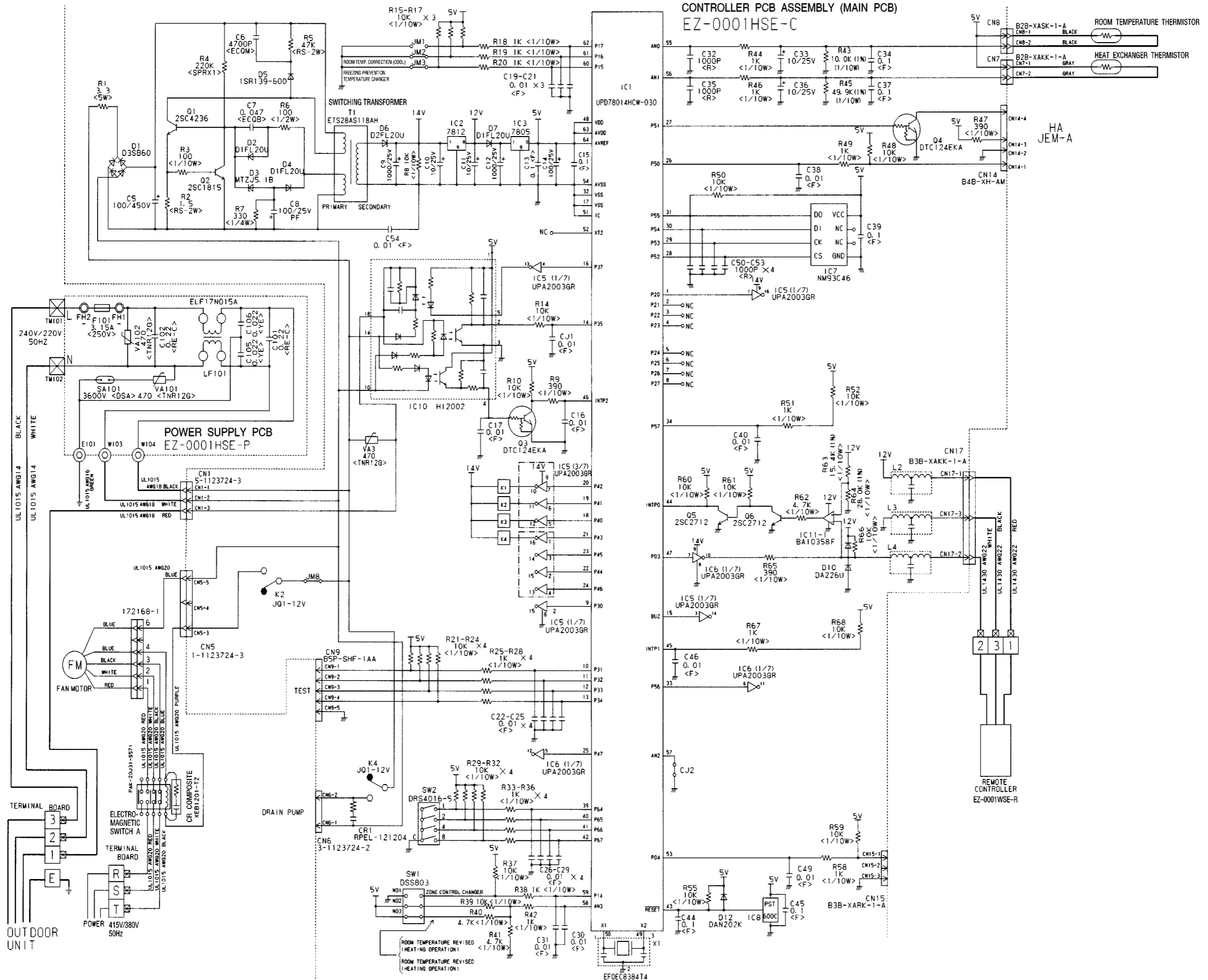
REFRIGERANT SYSTEM DIAGRAM

Models : RD-90EB / RO-90EPB



INDOOR PRINTED CIRCUIT BOARD CIRCUIT DIAGRAM

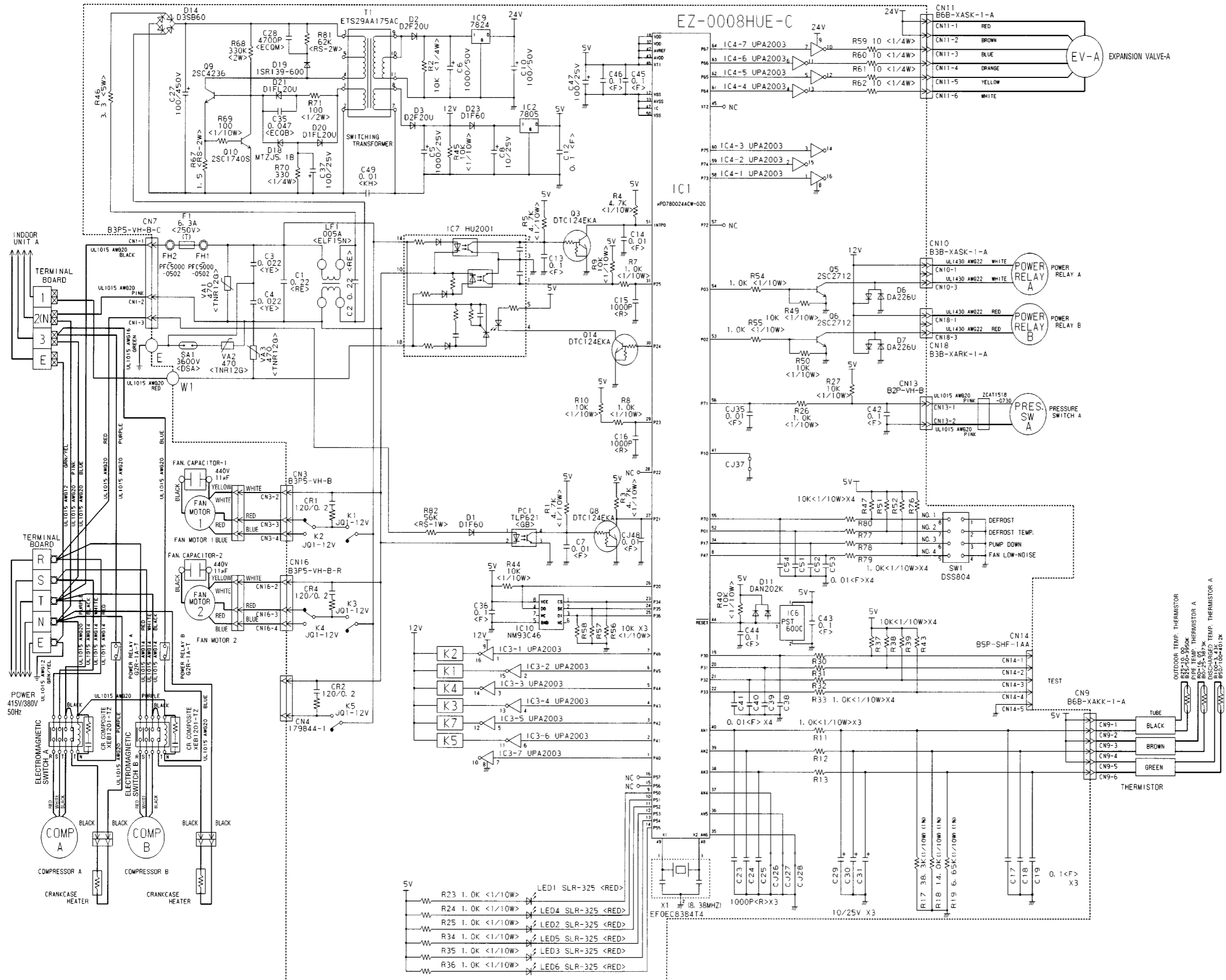
Model : RD-90EB



OUTDOOR PRINTED CIRCUIT BOARD CIRCUIT DIAGRAM

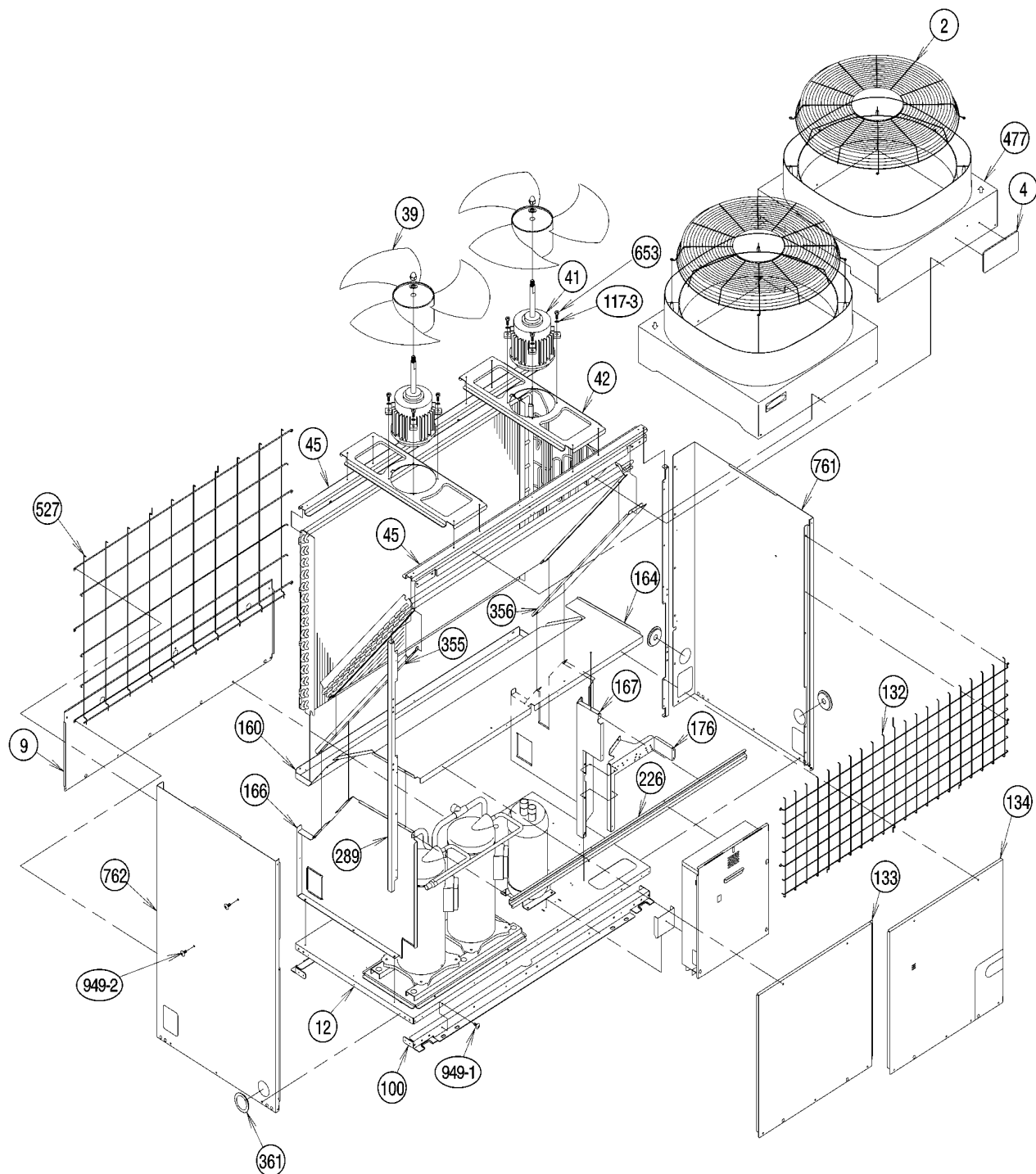
Model : RO-90EPB

CONTROLLER PCB ASSEMBLY (MAIN PCB)

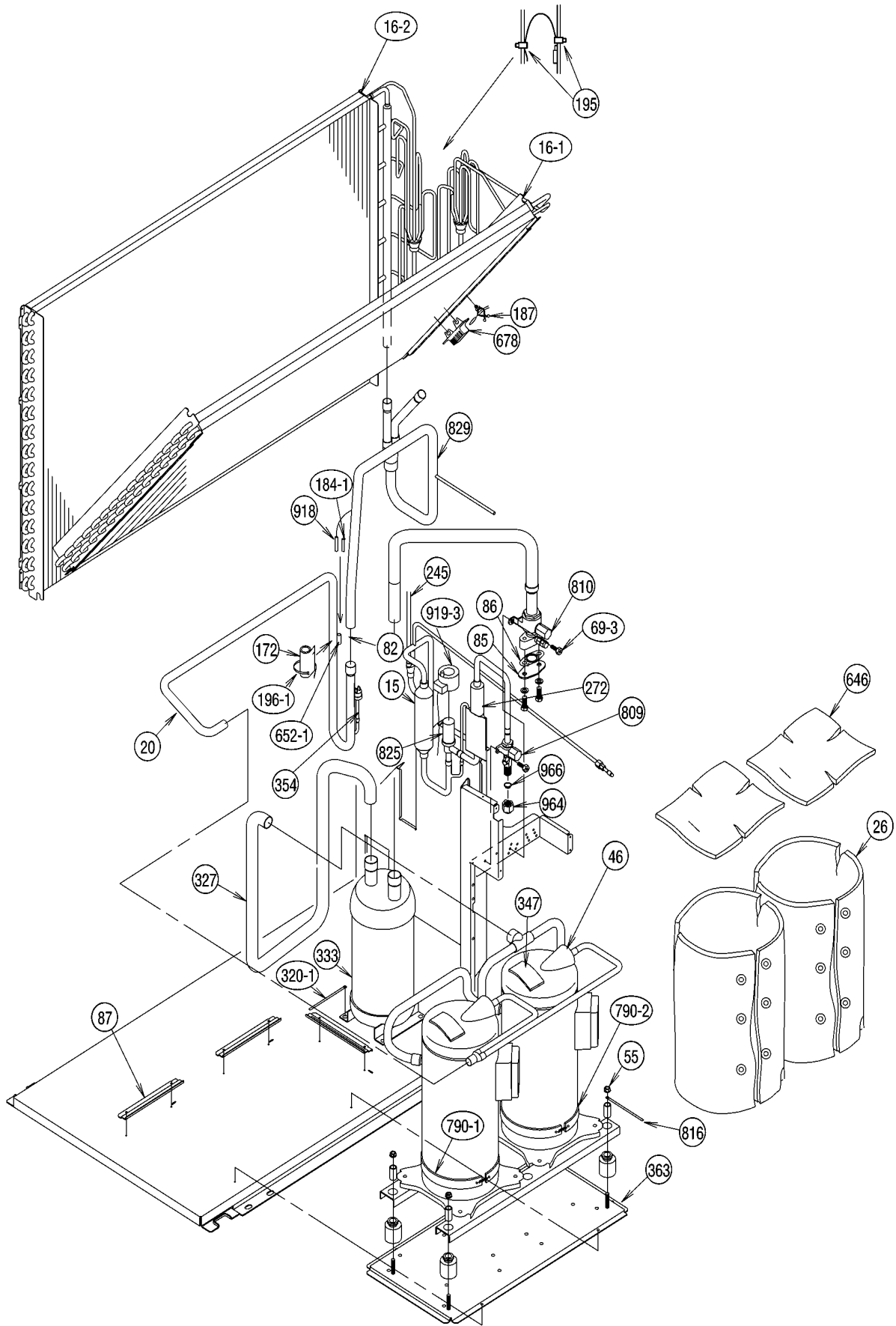


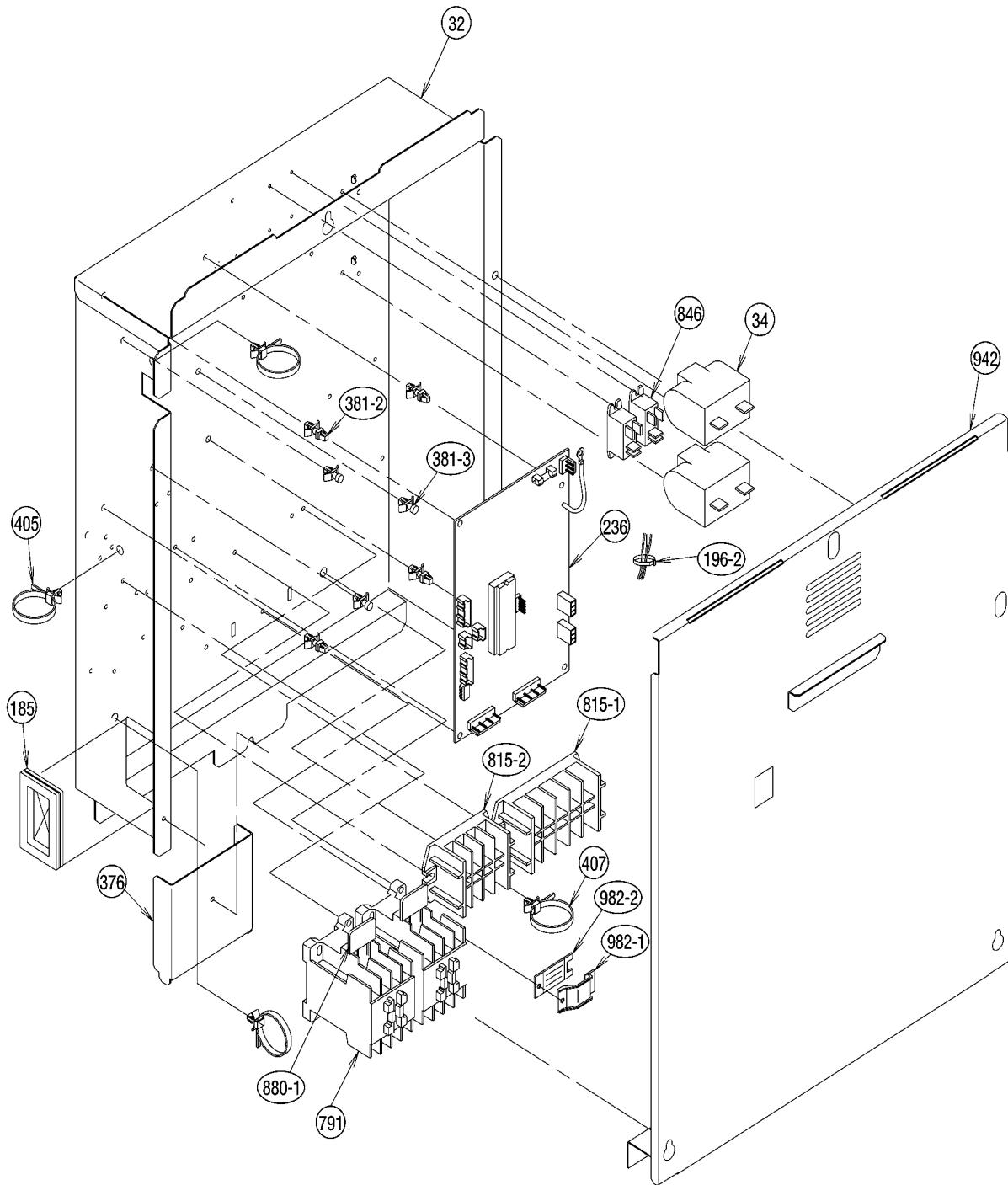
DISASSEMBLY ILLUSTRATION

Model : RO-90EPB

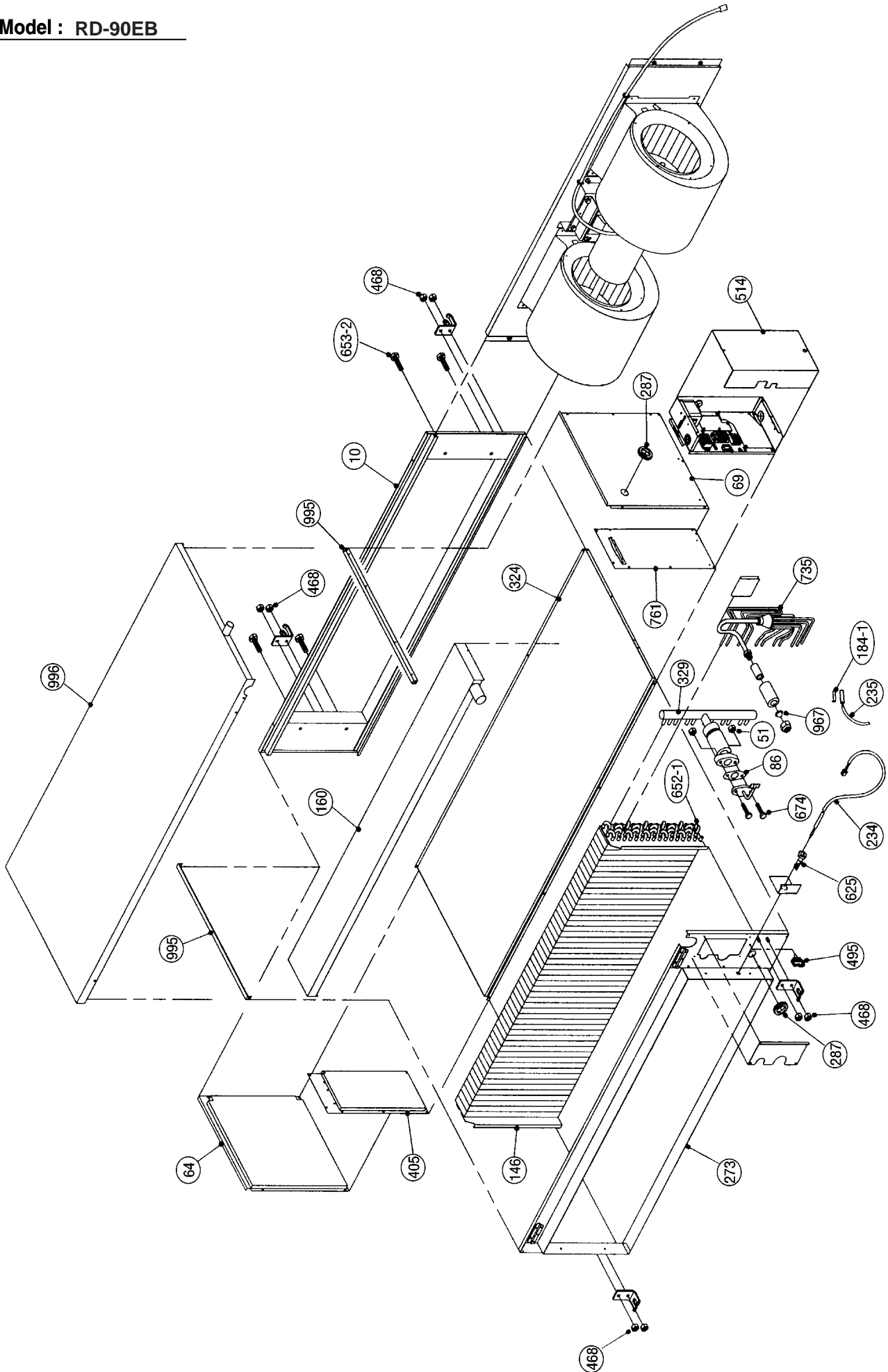


Model : RO-90EPB

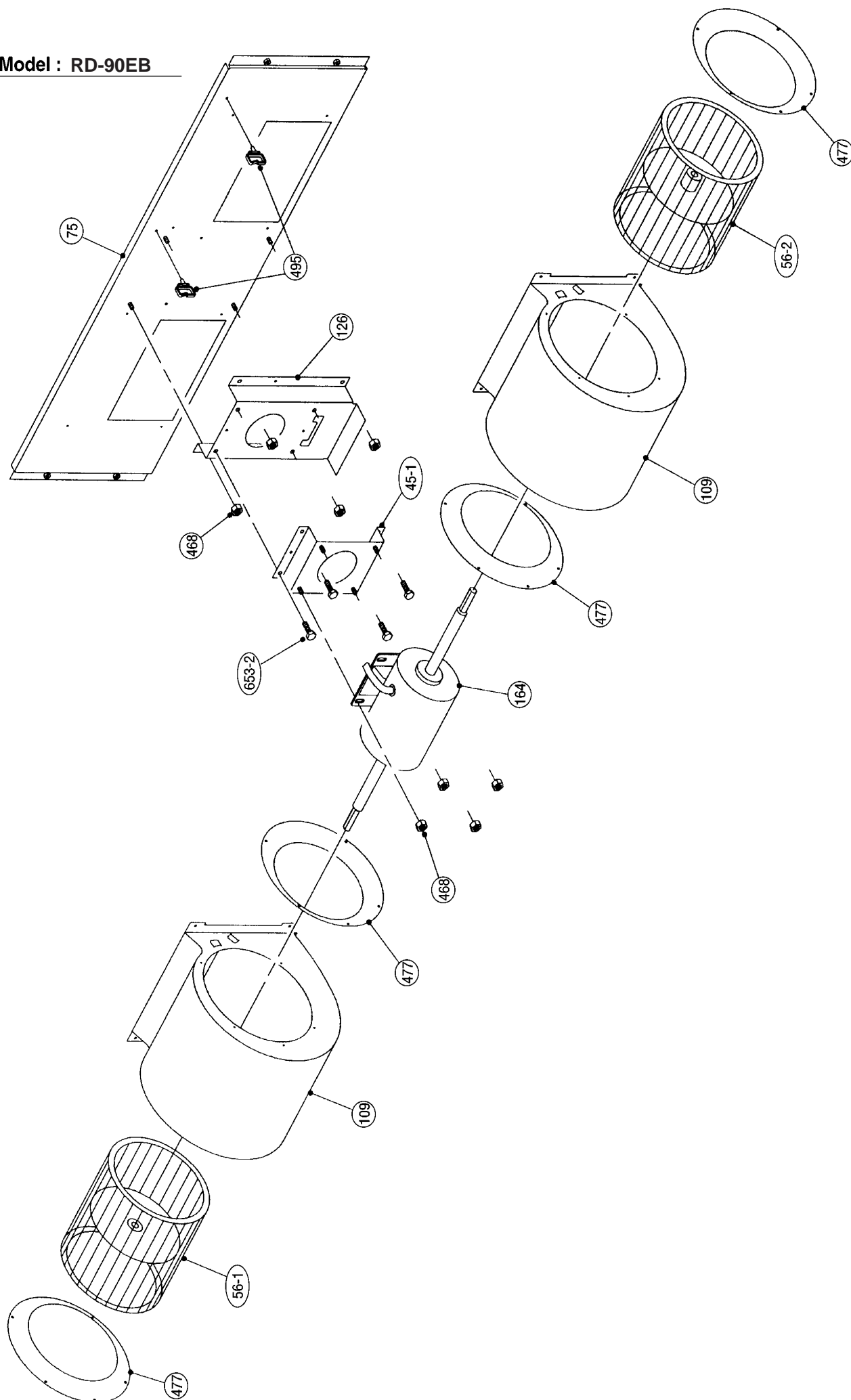




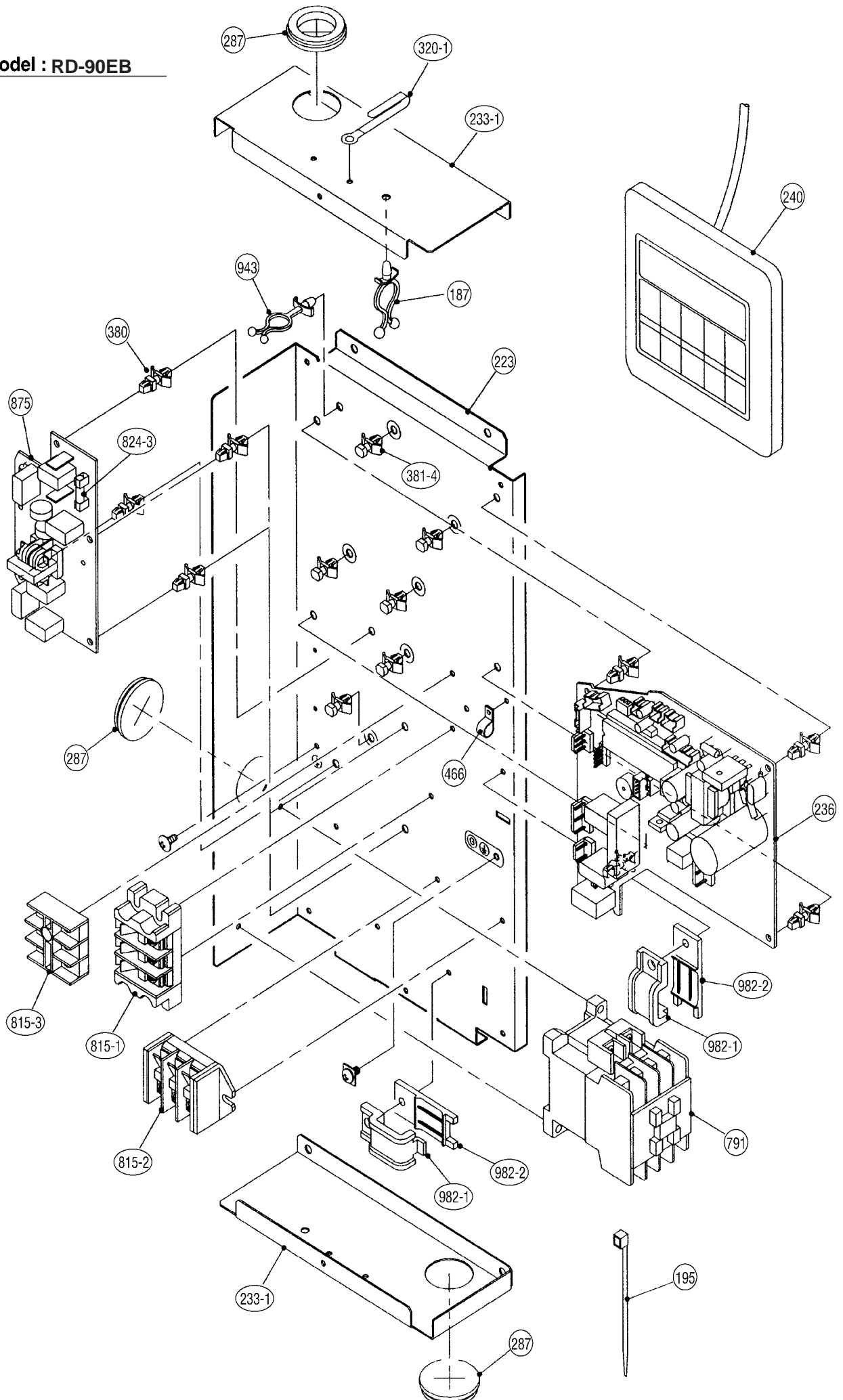
Model : RD-90EB



Model : RD-90EB



Model : RD-90EB



P A R T S L I S T

When you order parts, please make a photocopy of this page and fill the number of the parts in the "Order" column.

INDOOR UNIT

| Ref. No. | Description | Part No. | Ord. Q'ty | Ref. No. | Description | Part No. | Ord. Q'ty |
|----------|----------------------|--------------|-----------|----------|-------------------------|--------------|-----------|
| | | RD-90EB | | | | RD-90EB | |
| 10 | Front Panel Assy | 9364635002 | | 329 | Coupling Pipe Assy | 9365347003 | |
| 45-1 | Bracket (Motor) Assy | 9364630007 | | 380 | Locking Spacer KGLS-6S | 313209391403 | |
| 51 | Nut | 0700005091 | | 381-4 | Locking Spacer KGPS-6S | 0600118075 | |
| 56-1 | Sirocco Fan-R | 9364665016 | | 405 | Panel Side | 9364648002 | |
| 56-2 | Sirocco Fan-L | 9364665023 | | 466 | Clamp NK-4N | 313714328805 | |
| 64 | Left Panel | 9364650005 | | 468 | Nut-A M8 | 9356998009 | |
| 69 | Right Panel | 9364649009 | | 477 | Bellmouth | 9364664002 | |
| 75 | Fan Panel | 9364629001 | | 495 | Clamp No.2U46 | 9352715006 | |
| 86 | Gasket | 9363272000 | | 514 | Control Box Cover Metal | 9365186008 | |
| 109 | Casing Assy | 9364660004 | | 625 | Cord Bushing | 9359240006 | |
| 126 | Motor Plate Assy | 9364632001 | | 652-1 | Therm. Holder Pipe | 313806262805 | |
| 146 | Evaporator Assy | 9370825015 | | 653-2 | Bolt HLSJ8025ZV | 0700190018 | |
| 160 | Drain Pan Assy | 9364652023 | | 674 | Bolt LSM10045 | 0700145117 | |
| 164 | Fan Motor Assy-In | 9601004004 | | 735 | Distributor Assy | 9366556008 | |
| 184-1 | Thermo. Spring-A | 313728262708 | | 761 | Side Panel-R Assy | 9365147009 | |
| 187 | Clamp No.1219 | 313361271706 | | 791 | Magnetic Relay | 9900002015 | |
| 195 | Clamp SKB-100 | 313361275805 | | 815-1 | Terminal 3P | 9356488005 | |
| 223 | Control Box Metal | 9365185001 | | 815-2 | Terminal 3P | 9363276046 | |
| 233-1 | Plate (Box) | 9365146002 | | 815-3 | Terminal 3P | 9703345012 | |
| 234 | Thermistor Assy-Room | 9703299056 | | 824-3 | Fuse | 0600285210 | |
| 235 | Thermistor Assy-Pipe | 9703297021 | | 875 | Filter PCB Assy | 9703402029 | |
| 236 | Controller PCB Assy | 9703695025 | | 943 | Wire Clamp | 0600231019 | |
| 240 | Remote Control Unit | 9703173066 | | 967 | Bonnet-B | 9936229490 | |
| 273 | Rear Panel Assy | 9364642000 | | 982-1 | Cord Clamp | 9356857009 | |
| 287 | Cap (Power) | 9352173011 | | 982-2 | Cord Clamp-B | 9356858006 | |
| 320-1 | Wire Clamp Metal | 313483219905 | | 995 | Beam | 9364647005 | |
| 324 | Top Plate | 9364634005 | | 996 | Drain Pan (S) Assy | 9364893013 | |









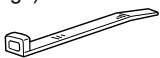

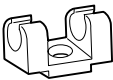

When you order parts, please make a photocopy of this page and fill the number of the parts in the "Order" column.

OUTDOOR UNIT

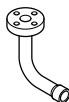



| Ref. No. | Description | Part No. | Ord. Q'ty | Ref. No. | Description | Part No. | Ord. Q'ty |
|----------|-------------------------------|--------------|-----------|----------|-------------------------|--------------|-----------|
| | | RO-90EPB | | | | RO-90EPB | |
| 2 | Fan Cover | 9366142010 | | 320-1 | Wire Clamp Metal | 313483219905 | |
| 4 | Emblem-Rear "FUJI ELEC" | 9361328006 | | 327 | Suction Pipe - A | 9365599006 | |
| 9 | Rear Panel, Painted | 9361712027 | | 333 | Accumulator | 9371828015 | |
| 12 | Base Assy | 9361684003 | | 347 | Noise Insulation - D | 313712304109 | |
| 15 | Dryer | 9369978012 | | 354 | Pressure Switch | 9704045003 | |
| 16-1 | Condenser-A Assy | 9370620016 | | 355 | Bracket (Condenser) - L | 9361698000 | |
| 16-2 | Condenser-B Assy | 9370621013 | | 356 | Bracket (Condenser) - R | 9361699007 | |
| 20 | Discharge Pipe Assy | 9367222001 | | 361 | Bushing | 9361725003 | |
| 26 | Compressor Cover-A | 9361935006 | | 363 | Bracket Panel (Comp.) | 9361691018 | |
| 32 | Control Box | 9361713000 | | 376 | Bracket (Control Box) | 9361727007 | |
| 34 | Capacitor (Fan Motor) | 9703306037 | | 381-2 | Locking Spacer KGLS-8S | 0600035020 | |
| 39 | Propeller Fan | 9361726000 | | 381-3 | Locking Spacer KGPS-8S | 0600118051 | |
| 41 | Fan Motor Assy-Outer | 9601271017 | | 405 | Clamp No.1763 | 313816345304 | |
| 42 | Bracket Panel (Motor) | 9361703001 | | 407 | Clamp(Cable) No.1259 | 313739340109 | |
| 45 | Bracket (Motor) | 9361701007 | | 477 | Bellmouth | 9361721005 | |
| 46 | Compressor Assy | 9367378005 | | 527 | Condenser Guard | 9366143017 | |
| 55 | Special Nut M8 | 313252257701 | | 646 | Compressor Cover - B | 9361936003 | |
| 69-3 | Bolt , Hex.Socket | 301210060360 | | 652-1 | Thermistor Holder Pipe | 313714262805 | |
| 82 | Check Joint Assy | 9363886009 | | 653 | Bolt, For Fan Motor | 0700145087 | |
| 85 | Valve Plate | 9363063004 | | 678 | Bracket (Thermistor) | 313557406106 | |
| 86 | Gasket | 9363272000 | | 761 | Side Panel - R, Painted | 9361706026 | |
| 87 | Bracket (Compressor) | 9361694002 | | 762 | Side Panel - L, Painted | 9361705029 | |
| 100 | Base Foot , Painted | 9361688025 | | 790-1 | Belt Heater - A | 9361140042 | |
| 117-3 | Special Washer M6 | 313306391007 | | 790-2 | Belt Heater - B | 9361140059 | |
| 132 | Front Protection Net | 9366144014 | | 791 | Magnetic Relay | 9363277005 | |
| 133 | Front Panel - L | 9361709027 | | 809 | Ball Valve - A | 9361937000 | |
| 134 | Front Panel - R | 9361710047 | | 810 | Ball Valve - B | 9361938007 | |
| 160 | Drain Pan | 9361700000 | | 815-1 | Terminal 5P | 9363275018 | |
| 164 | Separate Wall - Upper | 9361693005 | | 815-2 | Terminal 4P | 9363276015 | |
| 166 | Separate Wall - L | 9361695009 | | 816 | Wire Clamp Metal | 313584219902 | |
| 167 | Separate Wall - R | 9361696006 | | 825 | Expansion Valve Assy | 9366558002 | |
| 172 | Pipe Cover | 9363470000 | | 829 | Joint Pipe Assy | 9362922005 | |
| 176 | Bracket (Valve) - A | 9368955007 | | 846 | Relay | 9304375005 | |
| 184-1 | Thermostat Spring-A | 313728262708 | | 880-1 | Network (C - R) | 9700987017 | |
| 185 | Rubber Bushing | 313005066051 | | 918 | Thermistor Assy | 9900125011 | |
| 187 | Clamp No.1219 | 313361271706 | | 919-3 | Expansion Valve Coil | 9361930001 | |
| 195 | Clamp SKB - 100 | 313361275805 | | 942 | Control Box Cover | 9361716001 | |
| 196-1 | Clamp SKB - 3M | 312300787605 | | 949-1 | Screw, Painted | 9305648009 | |
| 196-2 | Clamp SKB - 150 | 313035356905 | | 949-2 | Screw, Painted | 9302348001 | |
| 226 | Reinforcement (Separate Wall) | 9361697003 | | 964 | Flare Nut | 9363273007 | |
| 236 | Controller PCB Assy | 9704051011 | | 966 | Bonnet | 9363274004 | |
| 245 | Condensing Pipe - M | 9367200009 | | 982-1 | Cord Clamp | 9356857009 | |
| 272 | Strainer | 9361931008 | | 982-2 | Cord Clamp - B | 9356858006 | |
| 289 | Reinforcement (Side Panel) | 9361704008 | | | | | |

STANDARD ACCESSORIES

INDOOR UNIT ACCESSORIES

| Name and Shape | Q'ty | Application | RD-90EB |
|---|------|---|------------------------------|
| Remote control unit  | 1 | Use for air conditioner operation | 9703173066 (EZ-0001WSE-R) |
| Flange joint  | 1 | For connecting the piping | 9365352007 |
| Gasket  | 1 | Installation between flange joint and indoor unit | 9363272000 |
| Special nut A (Large flange)  | 4 | For suspending the indoor unit from ceiling | 313005446653 |
| Special nut B (Small flange)  | 4 | | 313005446759 |
| Washer  | 8 | | 9364938004 |
| Coupler heat insulation  | 1 | For indoor side pipe joint (small) | 9350716029 |
| Flange joint insulation  | 1 | For indoor side pipe joint (large) | 9364937007 |
| Binder (Large)  | 1 | For fixing the connection pipe (Large and small) | 9366156000 |
| Binder (Small)  | 1 | For fixing the remote control unit cord | 313361275805 |
| Remote control unit cord clamp  | 10 | For installing the remote control unit cord | 313714181904 |
| Screw  | 10 | For installing the remote control unit cord clamp | 301141153027 |
| | 2 | For installing the remote control unit | 301141134166 |

OUTDOOR UNIT ACCESSORIES

| Name and Shape | Q'ty | Application | RO-90EPB |
|--|------|--|------------|
| Flange joint assembly  | 1 | For connecting the piping | 9363035001 |
| Coupler heat insulation  | 1 | For outdoor side pipe joint | 9363828009 |
| Gasket  | 1 | Installation between flange joint assembly and valve B | 9363272000 |
| Bolt  | 2 | For fixing the flange joint assembly | 0700145100 |



MANUFACTURER :

Fuji Denki Sosetsu Co., Ltd.

Tokyo, Japan

0303G2187



Большая библиотека технической документации

<https://splitsystema48.ru/instrukcii-po-ekspluatacii-kondicionerov.html>

каталоги, инструкции, сервисные мануалы, схемы.